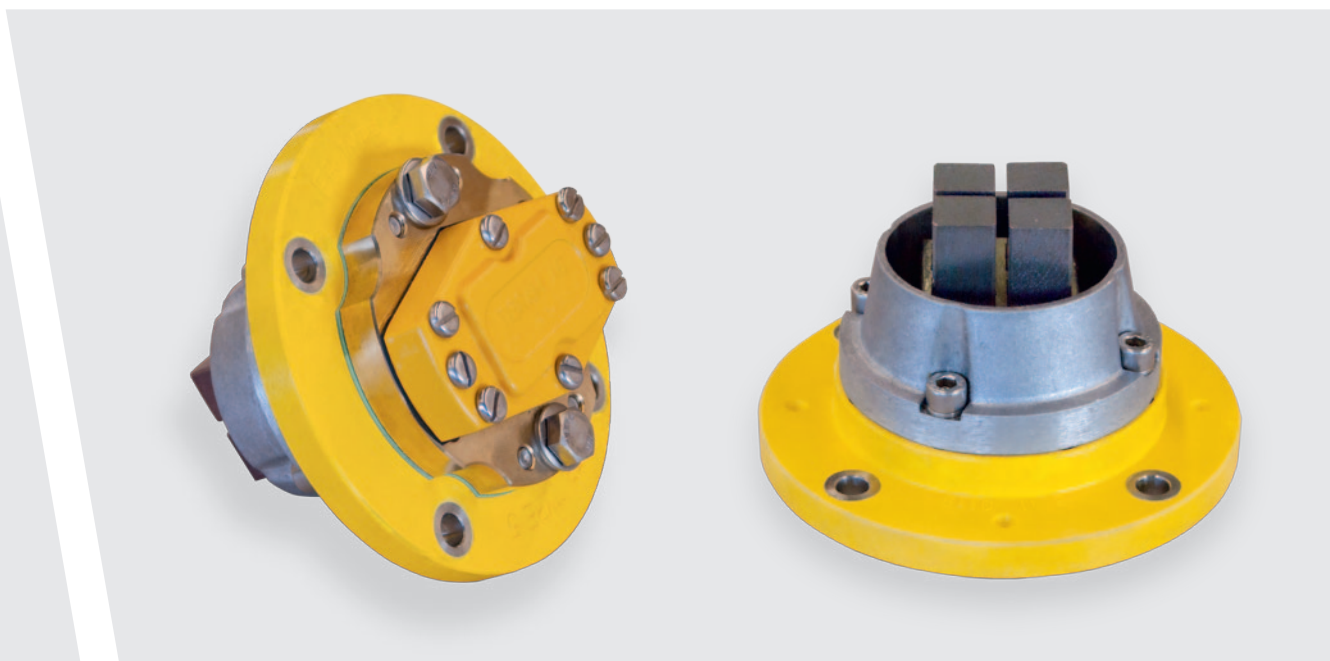


EARTHING CONTACT TYPE 5



Product features

- 4 individual spring-loaded carbon brushes
- Housing in bronze
- Minimal dimensions due to compact design
- Mass max. 3.0 kg
- Best transistance resistance
- Current up to 1'000A
- Integrated seal with protection tube
- Cable holder with integrated pull relief
- Wear-less contact disc in hardened steel
- Life cycle of carbon brushes up to 2 mio. km
- Adapted to extreme environmental conditions

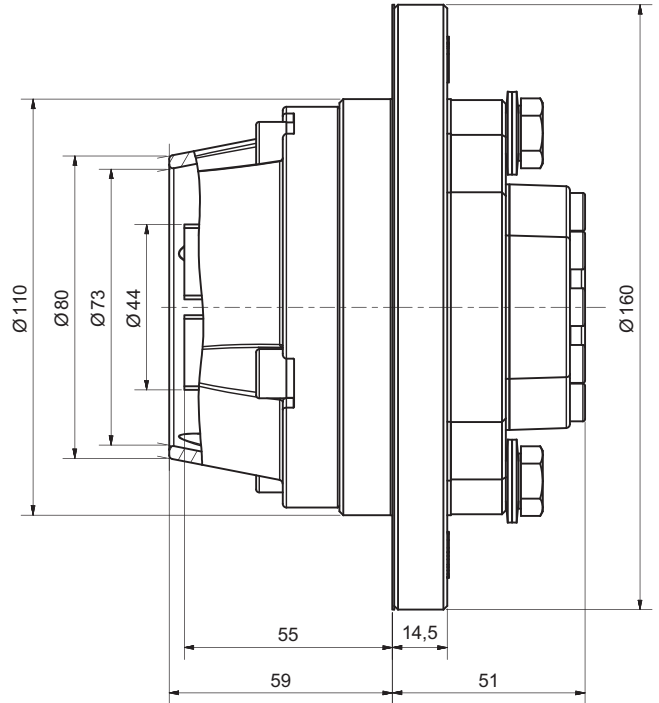
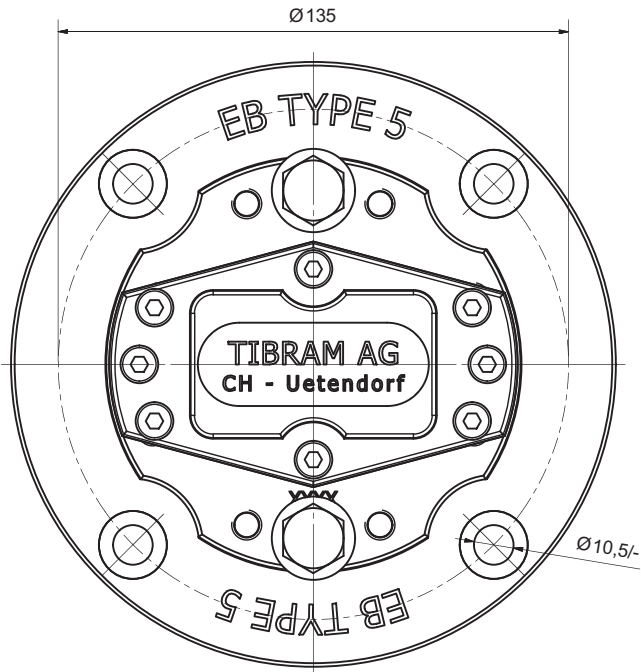
Accessories kit

- Contact disc
- Cable holder
- Fixing parts

Quality assurance

100% function and pre-delivery check

EARTHING CONTACT TYPE 5



Variantes

11 05 10z

- 1: earthing contact up to 1'000A
- 3: earthing contact up to 1'000A,
incl. cable holder (d=16)

Type 5

Standards

- Vibration resistance:
 - EN 61373:2010 cat. 3
- Protection class:
 - IP69K (DIN 40050-9/EN 60529)
- Fire protection:
 - EN45545-2:2013,R23-HL3
- Peak current resistance:
 - detailed information on demand

Fixing parts

- 4 hexagon head screws
- 4 spring washers

TIBRAM AG

Rail technology

Industriestrasse 2
 CH-3661 Uetendorf
 Phone +41 (0)33 345 10 57
 Fax +41 (0)33 345 59 57

www.tibram.ch
 info@tibram.ch

Detailed technical documentation and 3D-models are available at Tibram.